

SCOUT

MODEL • AGENCY

JESSICA G. MAIN

HEIGHT 174 cm BUST/WAIST/HIPS 76/60/88 cm EYES dark brown HAIR blonde SHOES 38 LOCATION Singapore SG



JESSICA G. MAIN

HEIGHT 174 cm BUST/WAIST/HIPS 76/60/88 cm EYES dark brown HAIR blonde SHOES 38 LOCATION Singapore SG



On Jessica (this page): Wool jacket and matching pants, U.S. blouse, Pochacco [Jelly Pisto wood top-handle bag and leather pumps, Fendi, Clash de Carrière pink gold small hoop earrings and large single earring, as well as matching small and medium necklaces, and small and medium rings (on right third finger). On Sara (opposite): Wool sweater, Prada, Juste un Clois pink [Jelly Pisto wood top-handle bag and leather pumps, Fendi, Clash de Carrière pink gold small hoop earrings and large single earring, as well as matching small and medium necklaces, and small and medium rings (on right third finger).



JESSICA GON, 22, COMMUNICATIONS STUDENT & MODEL, SIGNED TO BASIC MODELS

What are your post-graduation plans? "Up till now, I've modelled only part-time because of my studies, so after graduation (from the National University of Singapore), I'd love to take a gap year to pursue it full-time to see how far I can go. And if modelling doesn't work out, I've done internships at advertising firms so I might go back to that industry." **What do you like – and not like – most about modelling?** "I love how no two shoots are the same and that I meet different people each time I go for one. It's nice that the job is very unpredictable. What I don't like is how it's perceived. Many people seem to think that it's very glamorous or that models do it to gain clout. I do it because I genuinely enjoy the craft that goes into being in front of the camera or walking a runway, in the same way that an actor likes performing on stage." **Instagram or TikTok?** "I actually try to avoid using too much social media but, as a model, I'm encouraged to be more active on Instagram to give potential clients a sense of my personality. I thus use my public account (@jessicagonaway) primarily to share my modelling stuff and a private Finsta for sharing things more freely with my closest friends. I don't feel like the whole world needs to know that I'm going, say, for dinner and would rather keep such personal moments private."

On Jessica (this page): Leather jacket, cotton tank top, wool skirt, short and leather pumps, Prada. On Sara (opposite): Fantasy tweed jacket and wool tights, Chanel



PRESTIGE

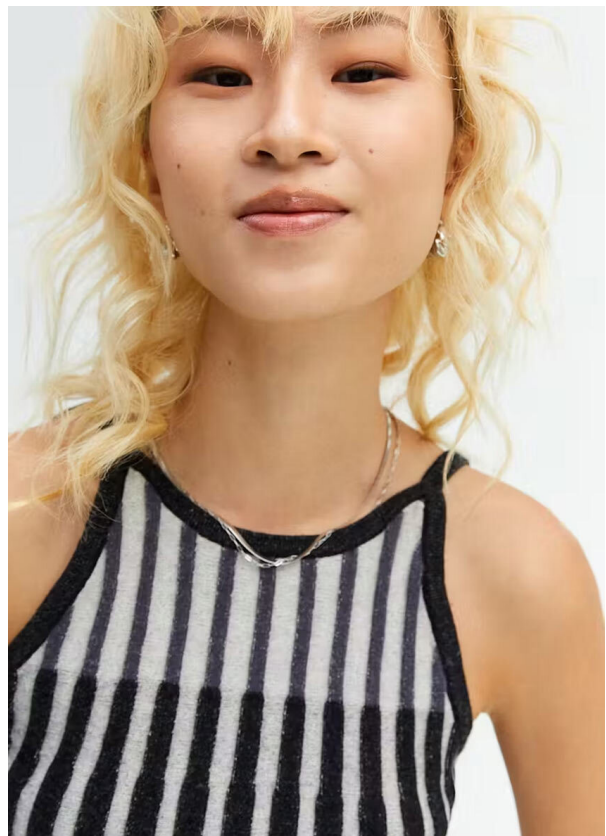


SCOUT

MODEL • AGENCY

JESSICA G. MAIN

HEIGHT 174 cm BUST/WAIST/HIPS 76/60/88 cm EYES dark brown HAIR blonde SHOES 38 LOCATION Singapore SG



SCOUT

MODEL • AGENCY

JESSICA G. MAIN

HEIGHT 174 cm BUST/WAIST/HIPS 76/60/88 cm EYES dark brown HAIR blonde SHOES 38 LOCATION Singapore SG

