

SCOUT

MODEL • AGENCY

JASMIN B. 30 PLUS

HEIGHT 176 cm BUST/WAIST/HIPS 89/70/97 cm EYES blue HAIR blonde SHOES 41 LOCATION Aarau CH



SCOUT

MODEL • AGENCY

JASMIN B. 30 PLUS

HEIGHT 176 cm BUST/WAIST/HIPS 89/70/97 cm EYES blue HAIR blonde SHOES 41 LOCATION Aarau CH



SCOUT

MODEL • AGENCY

JASMIN B. 30 PLUS

HEIGHT 176 cm BUST/WAIST/HIPS 89/70/97 cm EYES blue HAIR blonde SHOES 41 LOCATION Aarau CH

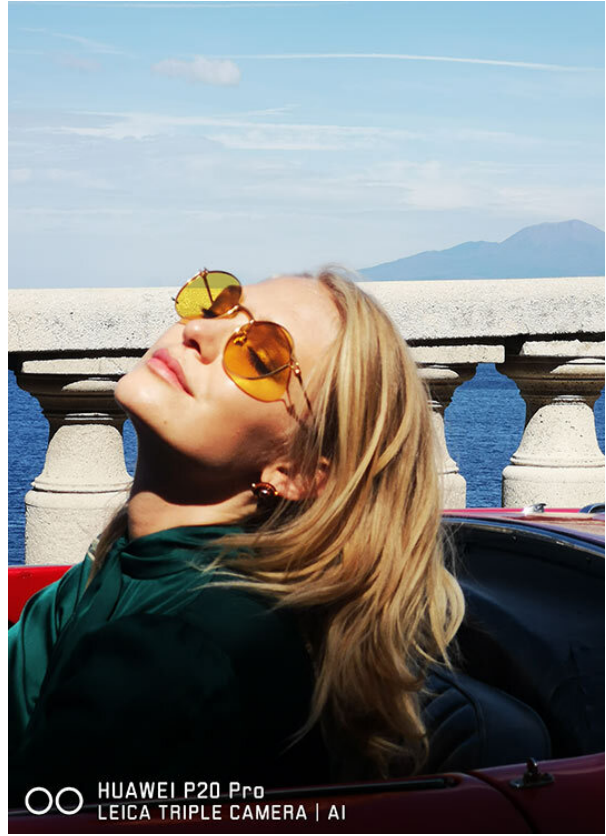


SCOUT

MODEL • AGENCY

JASMIN B. 30 PLUS

HEIGHT 176 cm BUST/WAIST/HIPS 89/70/97 cm EYES blue HAIR blonde SHOES 41 LOCATION Aarau CH



SCOUT

MODEL • AGENCY

JASMIN B. 30 PLUS

HEIGHT 176 cm BUST/WAIST/HIPS 89/70/97 cm EYES blue HAIR blonde SHOES 41 LOCATION Aarau CH



JASMIN B. 30 PLUS

HEIGHT 176 cm BUST/WAIST/HIPS 89/70/97 cm EYES blue HAIR blonde SHOES 41 LOCATION Aarau CH

night at the

PHOTOS ALEX LAMBRECHTS
WORDS JASMIN BRUNNER

CHEDI ANDERMATT

Nestled in the Swiss Alps, The Chedi Andermatt is a temple of minimalist oriental refinement. Numerous textures are combined with chalet style elements and Japanese design. When we arrived, we were impressed by the stark, yet opulent feel. The Chedi spaces are large and calming. Utmost attention is given to detail. The Japanese restaurant offers the largest Sake selection in Switzerland, and at the main restaurant, the grandiose Cheese Tower triumphs like a piece of art.

78

