

# SCOUT

MODEL • AGENCY

## ANASTASIA V. MAIN

HEIGHT 178 cm BUST/WAIST/HIPS 80/61/91 cm JEANS 24/25 EYES green HAIR brown SHOES 40 LOCATION Paris FR



# SCOUT

MODEL • AGENCY

**ANASTASIA V.** MAIN

HEIGHT 178 cm BUST/WAIST/HIPS 80/61/91 cm JEANS 24/25 EYES green HAIR brown SHOES 40 LOCATION Paris FR



# SCOUT

MODEL • AGENCY

## ANASTASIA V. MAIN

HEIGHT 178 cm BUST/WAIST/HIPS 80/61/91 cm JEANS 24/25 EYES green HAIR brown SHOES 40 LOCATION Paris FR



# SCOUT

MODEL • AGENCY

ANASTASIA V. MAIN

HEIGHT 178 cm BUST/WAIST/HIPS 80/61/91 cm JEANS 24/25 EYES green HAIR brown SHOES 40 LOCATION Paris FR



# SCOUT

MODEL • AGENCY

## ANASTASIA V. MAIN

HEIGHT 178 cm BUST/WAIST/HIPS 80/61/91 cm JEANS 24/25 EYES green HAIR brown SHOES 40 LOCATION Paris FR



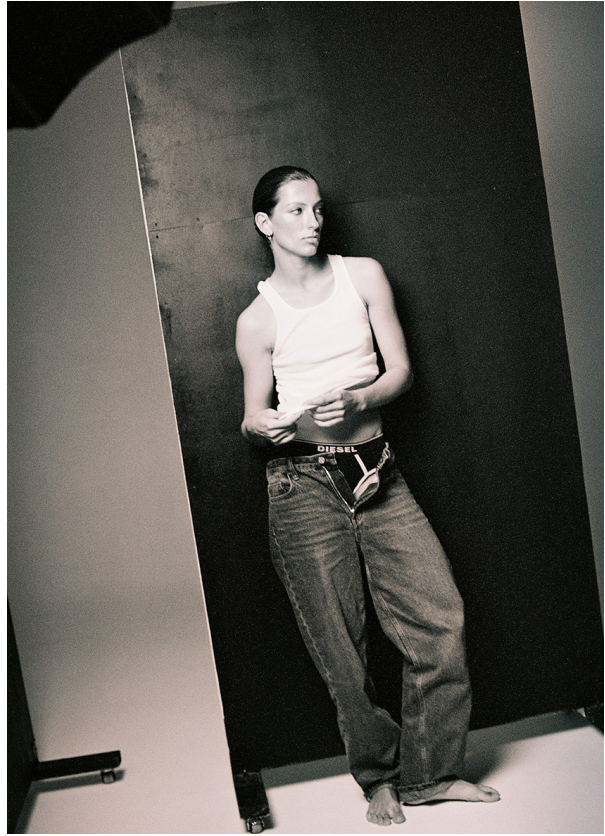
Lammleder-Jacke mit  
aufgesetzten Taschen:  
Gant, ca. 300 Euro  
Arbeitsleere Tasche  
Seiden-Mix: Filippa K,  
ca. 225 Euro  
Hose im  
Cargo-Stil mit Dum-  
mzug: Marc O'Plato,  
ca. 230 Euro  
Ring:  
Christ Kette: Chingong  
Ballenins: Unützer

# SCOUT

MODEL • AGENCY

**ANASTASIA V.** MAIN

HEIGHT 178 cm BUST/WAIST/HIPS 80/61/91 cm JEANS 24/25 EYES green HAIR brown SHOES 40 LOCATION Paris FR

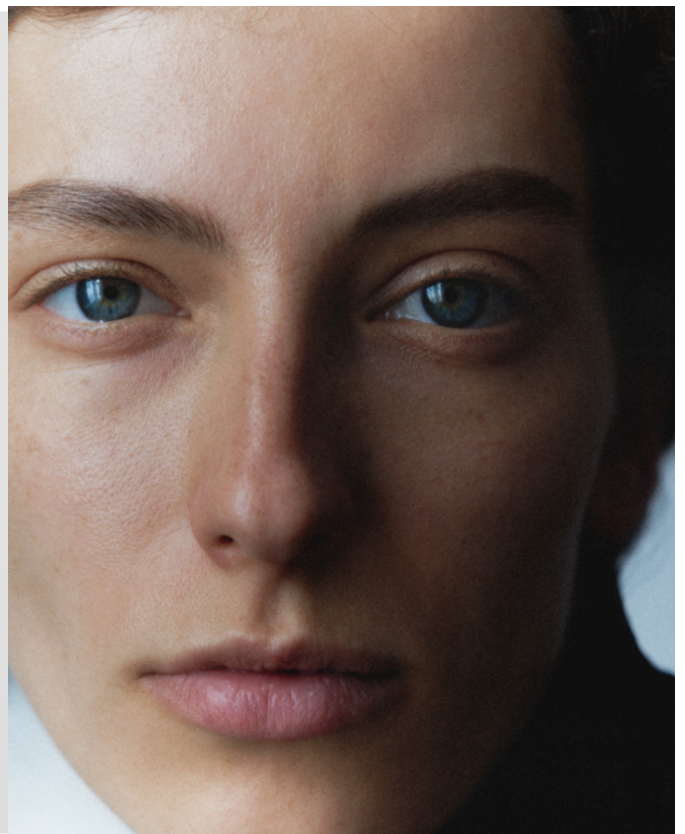


# SCOUT

MODEL • AGENCY

**ANASTASIA V.** MAIN

HEIGHT 178 cm BUST/WAIST/HIPS 80/61/91 cm JEANS 24/25 EYES green HAIR brown SHOES 40 LOCATION Paris FR



# SCOUT

MODEL • AGENCY

## ANASTASIA V. MAIN

HEIGHT 178 cm BUST/WAIST/HIPS 80/61/91 cm JEANS 24/25 EYES green HAIR brown SHOES 40 LOCATION Paris FR

