

SCOUT

MODEL • AGENCY

ANASTASIA V. MAIN

HEIGHT 178 cm BUST/WAIST/HIPS 80/61/91 cm JEANS 24/25 EYES green HAIR brown SHOES 40 LOCATION Paris FR



SCOUT

MODEL • AGENCY

ANASTASIA V. MAIN

HEIGHT 178 cm BUST/WAIST/HIPS 80/61/91 cm JEANS 24/25 EYES green HAIR brown SHOES 40 LOCATION Paris FR



SCOUT

MODEL • AGENCY

ANASTASIA V. MAIN

HEIGHT 178 cm BUST/WAIST/HIPS 80/61/91 cm JEANS 24/25 EYES green HAIR brown SHOES 40 LOCATION Paris FR



SCOUT

MODEL • AGENCY

ANASTASIA V. MAIN

HEIGHT 178 cm BUST/WAIST/HIPS 80/61/91 cm JEANS 24/25 EYES green HAIR brown SHOES 40 LOCATION Paris FR



SCOUT

MODEL ● AGENCY

ANASTASIA V. MAIN

HEIGHT 178 cm BUST/WAIST/HIPS 80/61/91 cm JEANS 24/25 EYES green HAIR brown SHOES 40 LOCATION Paris FR



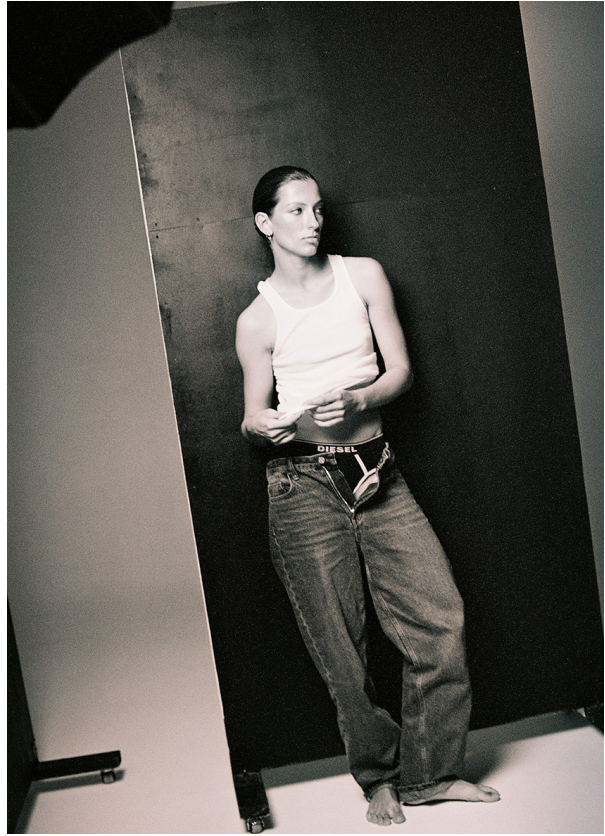
Lammleder-Jacke mit
aufgesetzten Taschen:
Gant, ca. 300 Euro
Arbeitsleere Top aus
Seiden-Mix: Filippa K,
ca. 225 Euro
Hose im
Cargo-Stil mit Dum-
mzug: Marc O'Plato,
ca. 230 Euro
Ring:
Christ Kette: Chingong
Ballenins: Unützer

SCOUT

MODEL • AGENCY

ANASTASIA V. MAIN

HEIGHT 178 cm BUST/WAIST/HIPS 80/61/91 cm JEANS 24/25 EYES green HAIR brown SHOES 40 LOCATION Paris FR

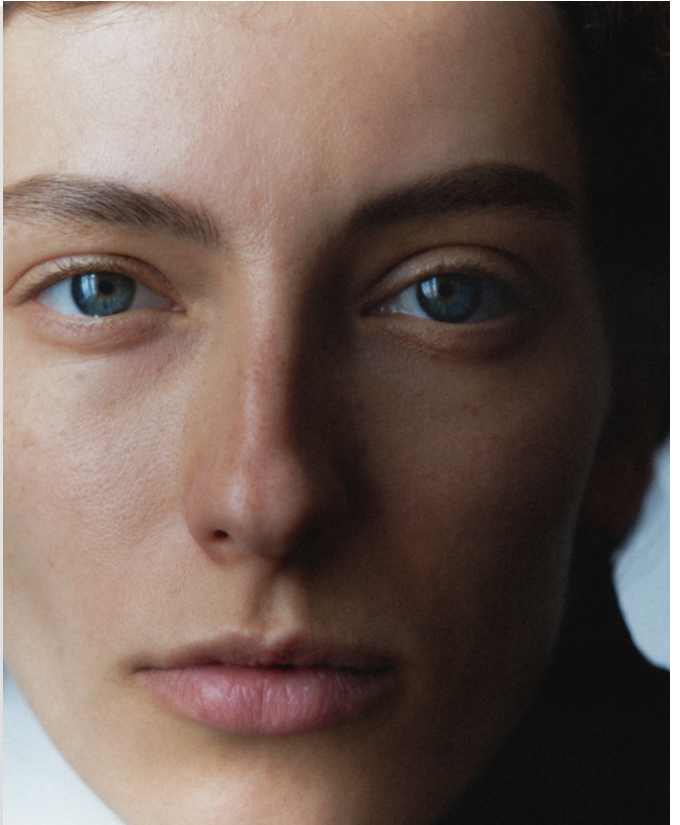


SCOUT

MODEL • AGENCY

ANASTASIA V. MAIN

HEIGHT 178 cm BUST/WAIST/HIPS 80/61/91 cm JEANS 24/25 EYES green HAIR brown SHOES 40 LOCATION Paris FR



SCOUT

MODEL • AGENCY

ANASTASIA V. MAIN

HEIGHT 178 cm BUST/WAIST/HIPS 80/61/91 cm JEANS 24/25 EYES green HAIR brown SHOES 40 LOCATION Paris FR

