

Robert V.

Grösse 190 | Masse 95/79/95 | Konfektion 48L | Schuhe 43/44 | Augen grün/blau | Haare hellbraun



COLLEZIONI UOMO N. 80



WWW.LOGO.INFO



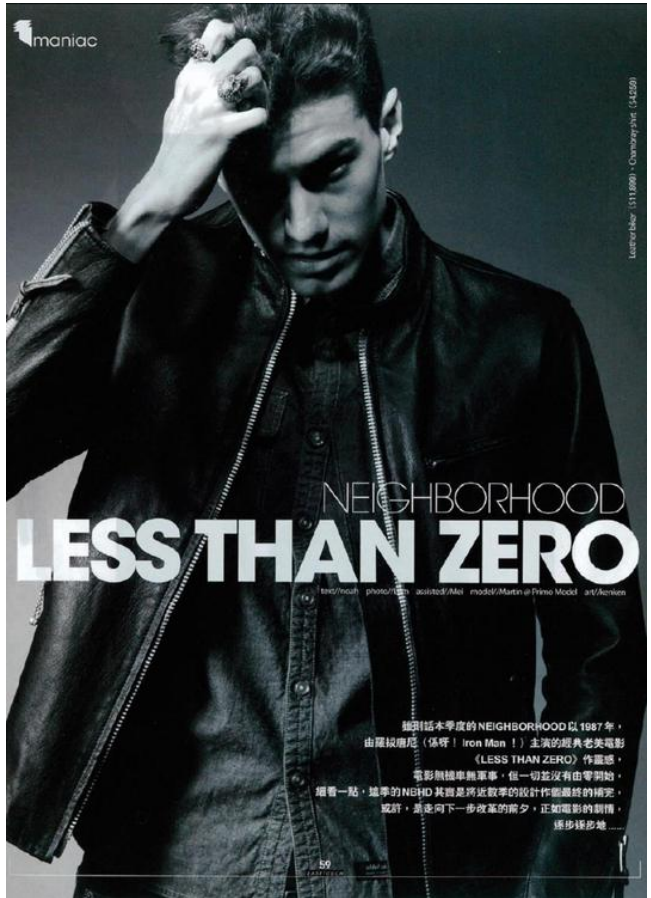
WWW.LOGO.INFO



COLLEZIONI UOMO N. 80

Robert V.

Grösse 190 | Masse 95/79/95 | Konfektion 48L | Schuhe 43/44 | Augen grün/blau | Haare hellbraun



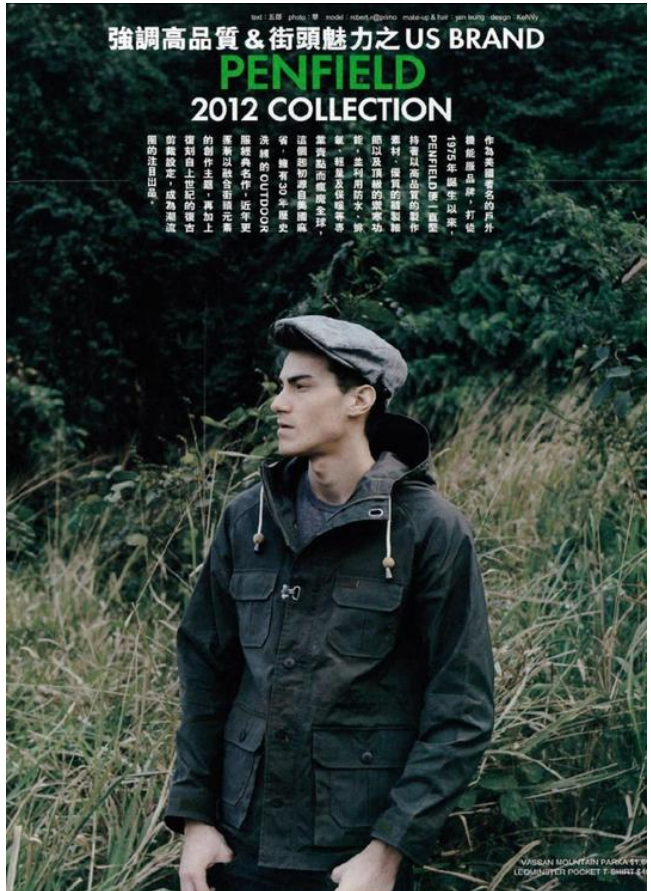
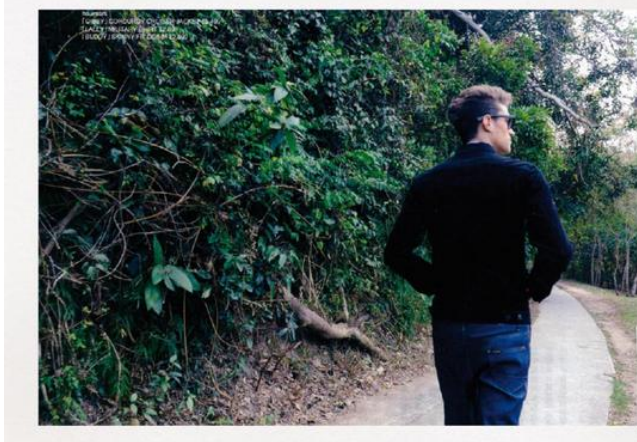
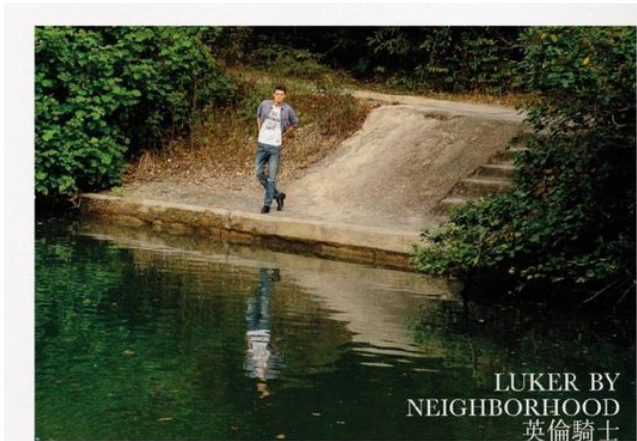
"WELCOME TO WORKSVILLE"
DIESEL
SPRING/SUMMER COLLECTION 2012

來到2012年春夏，DIESEL繼續重溫品牌元祖時代的工作服起源，透過「WELCOME TO WORKSVILLE」的創作概念，把上世紀歐洲勞動階級的獨特風格風格，化為簡潔剛強的男生服飾設計重點，將每天辛勤勞動的職人們，演繹成華麗型格的時尚象徵。

maniac photo: B. G. model: KIMBERLY GREGG design: 1984

Robert V.

Größe 190 | Masse 95/79/95 | Konfektion 48L | Schuhe 43/44 | Augen grün/blau | Haare hellbraun



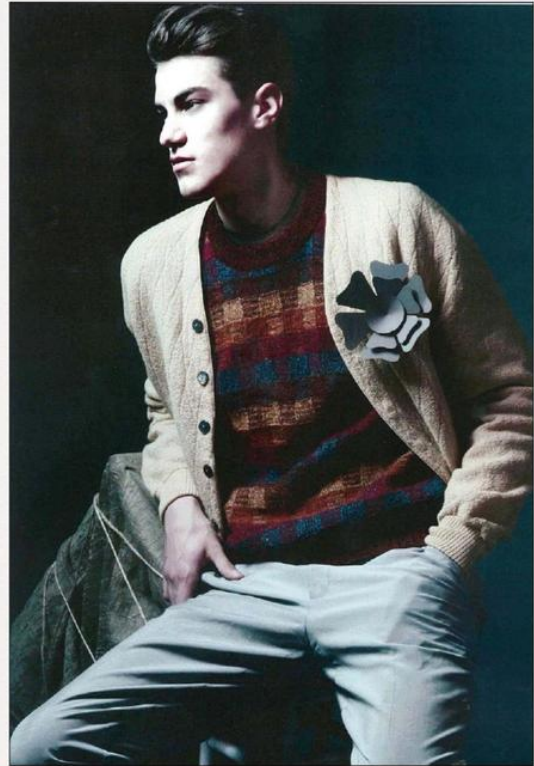
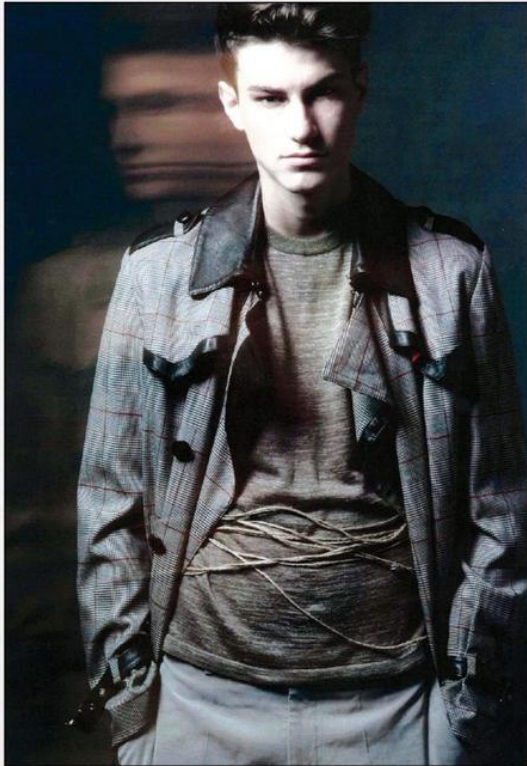
Robert V.

Grösse 190 | Masse 95/79/95 | Konfektion 48L | Schuhe 43/44 | Augen grün/blau | Haare hellbraun



Robert V.

Grösse 190 | Masse 95/79/95 | Konfektion 48L | Schuhe 43/44 | Augen grün/blau | Haare hellbraun



Robert V.

Grösse 190 | Masse 95/79/95 | Konfektion 48L | Schuhe 43/44 | Augen grün/blau | Haare hellbraun

Robert V.

Grösse 190 | Masse 95/79/95 | Konfektion 48L | Schuhe 43/44 | Augen grün/blau | Haare hellbraun